

Our Other Products



Acrylic Laminates
Gloss | Matte | Mirror
Marble | Wooden

SOLIDO
ULTRA MATTE &
SUPERIOR GLOSS
LAMINATES



ADOX
Acoustic



SUNSHINE INTERIOR

Plot No.-5, City Enclave, Godown Area,
Pabhat Road, Zirakpur - 140603 Punjab, India
Phone : +91 95011 01961, 85588 40543
Email : adoxinterior2021@gmail.com
Website : www.adox.co.in

For Visit Website
Scan QR Code



Follow Us On :   

Legal Disclaimer:
We have made our full effort to ensure that information contained in this brochure is accurate at time of publication. ADOX requests that you consult ADOX or authorized dealers, distributors or with company before placing any order to confirm current information on particular product, as ADOX holds right to make changes without any prior notice. ADOX will not be liable for any damage, loss or injury, whatsoever, arising from any errors or omissions from our product or brochure. Images shown in this catalogue is indicative only. If there is any inconsistency between the image and the actual product you receive, the actual product will govern.

Note:
1. No guarantee, No Return & Exchange of sold material in any circumstances. There can be colour variations in material from different batches. It is advised to use same batch material to avoid colour variations. 2. Do not use any chemical based cleaning product, do use Colin & Soft Cloth. 3. We advised to use only specific glue for acrylic pasting not other. 4. There should be variation of 10% (+/-) in thickness. 5. Storage : It is always advised that the laminates & the substrates are stored at temperature between 22° to 32° degree at relative humidity of 45.55%



PRE-LAMINATES GLASS ACRYLIC BOARD



**PRE-LAMINATES
GLASS ACRYLIC BOARD**



APB002*



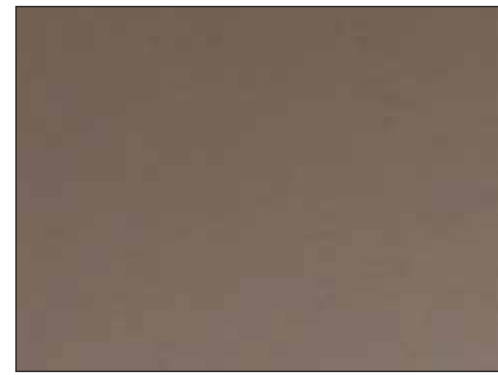
APB003*



APB004*



APB007*



ALS008*



APB009*



APB011**



ALS013*



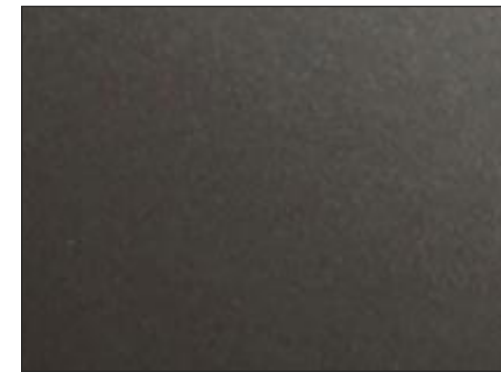
APB014**



APB017**



APB025*



APB026**



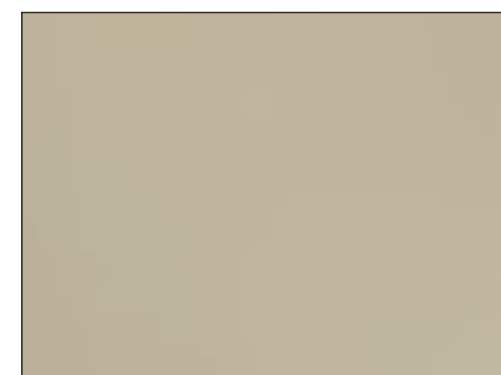
APB028**



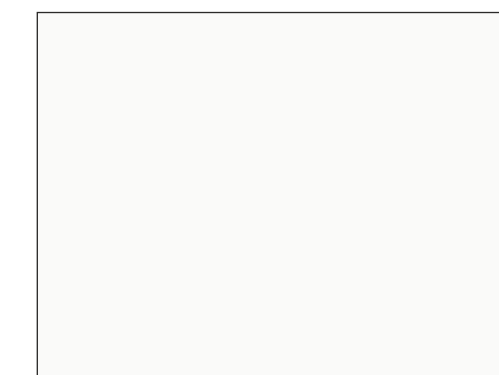
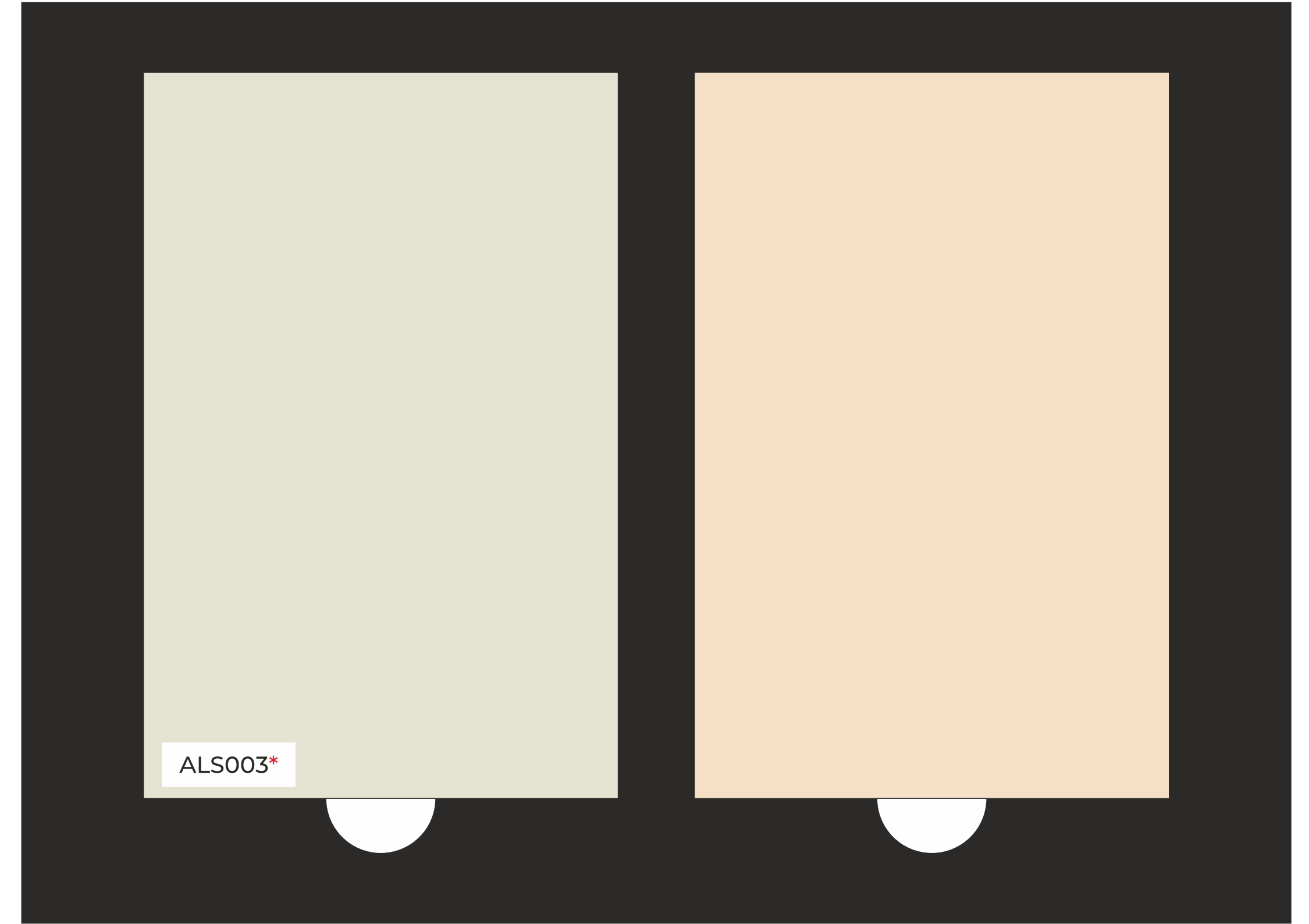
ALS030*



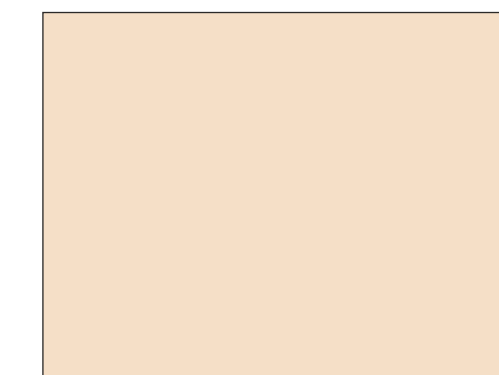
APB032*



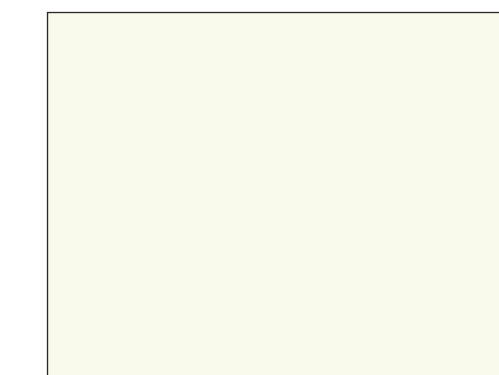
APB037*



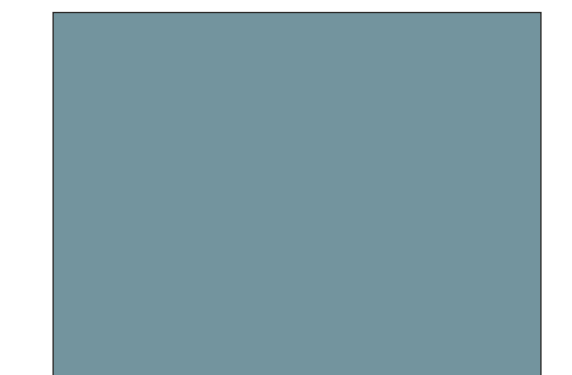
ABP101****



ABP102****



ABP104****



ABP105****