





THICKNESS

**10mm**

DENSITY

**2000g/m<sup>2</sup>**

STANDARD SIZE

**1220x2400mm**



# First to introduce Acoustic Non-Woven Polyester Fibre Panels in India.

## ADOX Wall Panel

is a high performing sound absorption material

---



High Performance  
**NRC 0.85-0.9**



It is made from  
**Polyester Fibre**



Light weight  
And flexible



High Resistance to  
Humidity & Moisture



Easy Installation  
& Maintenance



Highly Versatile—  
Cut to desired shape/size

# Polyester Staple Fiber



- Shrink and Stretch Resistant
- Resistant to most chemicals
- Mildew/Fungus resistant
- Abrasion resistant
- Not affected by organic solvents



# Various Applications

---

## WALL PANELS

Standard Size | Designer | Laser Cut | Printed Panel

## FALSE CEILINGS

Baffles | Ceiling Tiles | Floats | Cell Ceiling

## DIVIDERS

For Modular furniture

## PARTITIONS

Acoustic Dividers





---

## Certifications

Fire Classification:  
**B-s1, d0 as per EN-13501**



Acoustic Performance:  
**Up to 0.9NRC**





## ADOX Wall Panel

**ADOX Acoustic Panel** can be cut into any desired shape since it is a homogeneous product and easy to cut with sharp blade.



## **ADOX** Wall Panel - Designer

**ADOX Acoustic Panel** can be cut into any desired shape since it is a homogeneous product and easy to cut with sharp blade.



RECTANGULAR PANELS



HEXAGONAL PANELS



## **ADOX** Wall Panel - Designer

**ADOX Acoustic Panel** can be cut into any desired shape since it is a homogeneous product and easy to cut with sharp blade.

*Shown Top to Bottom:*

Rectangular Panels

Hexagonal Panels

Multi-colour strips

## **ADOX** Laser-cut Panels

**ADOX** Acoustic Panel can be laser cut bto any design



STANDARD SIZE  
1200 x 2400mm

# ADOX Printed Panels





## **ADOX** **Baffles**

- Custom made as per requirement
- High acoustic performance
- Areas of application–cafeteria, open spaces, lobbies, etc.



## **ADOX** **Baffles - Wavy**

- Custom made as per requirement
- High acoustic performance
- Areas of application–cafeteria, open spaces, lobbies, etc.



## **ADOX** **Baffles - Tapered**

- Custom made as per requirement
- High acoustic performance
- Areas of application–cafeteria, open spaces, lobbies, etc.



## **ADOX** **Baffles - Circular**

- Custom made as per requirement
- High acoustic performance
- Areas of application–cafeteria, open spaces, lobbies, etc.



## **ADOX** Ceiling Tiles

### T- GRID SYSTEM

- Available in multiple colours
- Also available in T-grid color to match the preferred shade.

### FIXED ON GYPSUM CEILING/FRAMING

- Can be pasted directly on gypsum ceiling or wooden framing on ceiling.

### STANDARD SIZE

595 x 595mm

295 x 1195mm

595 x 1195mm

## ADOX Floats

Available in square, hexagon, rectangle, circle, triangle and custom made shapes

STANDARD SIZE

1200 x 1200mm (can be customised)





## **ADOX** Cell Ceiling – Linear



## **ADOX** Cell Ceiling - Wavy



## **ADOX** Cell Ceiling - Tilted



## **ADOX** Cell Ceiling - Miniscus





## **ADOX** Cell Ceiling - Hive

## Acoustic Screens

Available in various patterns, laser cut according to your preferred design

STANDARD SIZE

1200 x 2400mm (can be customised)





APPLICATIONS



V-GROOVE PANEL





GROOVED PANEL





GROOVED PANEL





PRINTED PANEL





PRINTED PANEL





PRINTED PANEL





PRINTED PANEL







BAFFLE





BAFFLE





PAINTINGS  
40L



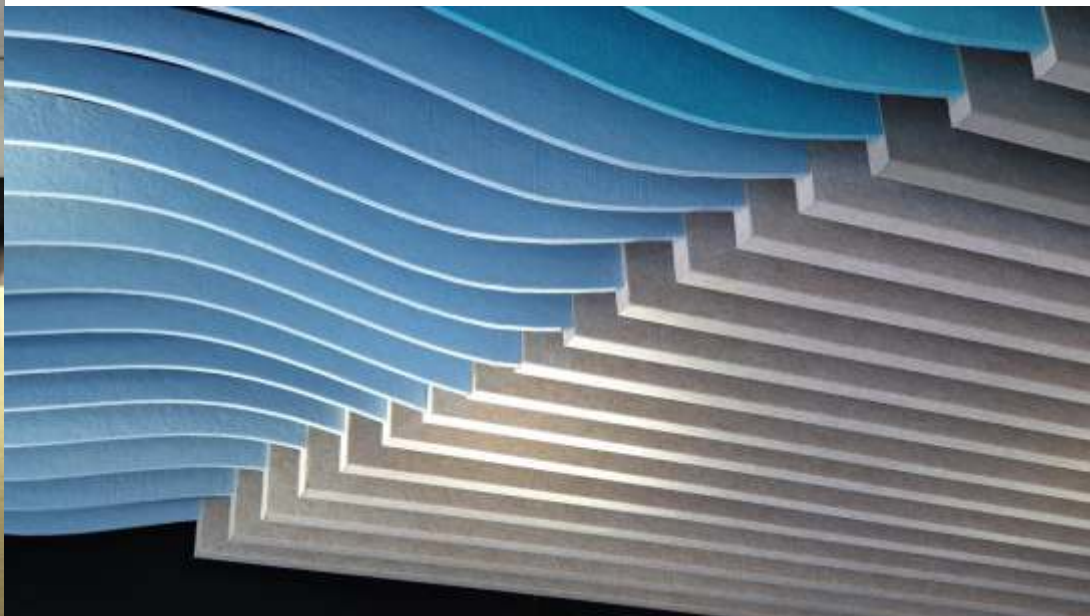
BAFFLE





BAFFLE





BAFFLE





BAFFLE





BAFFLE







BAFFLE





EXIT

Don't fear the failure of the first attempt, 'zero' only  
encourages the successful ones with 'zero' only





BAFFLE





BAFFLE



#Costa Rica



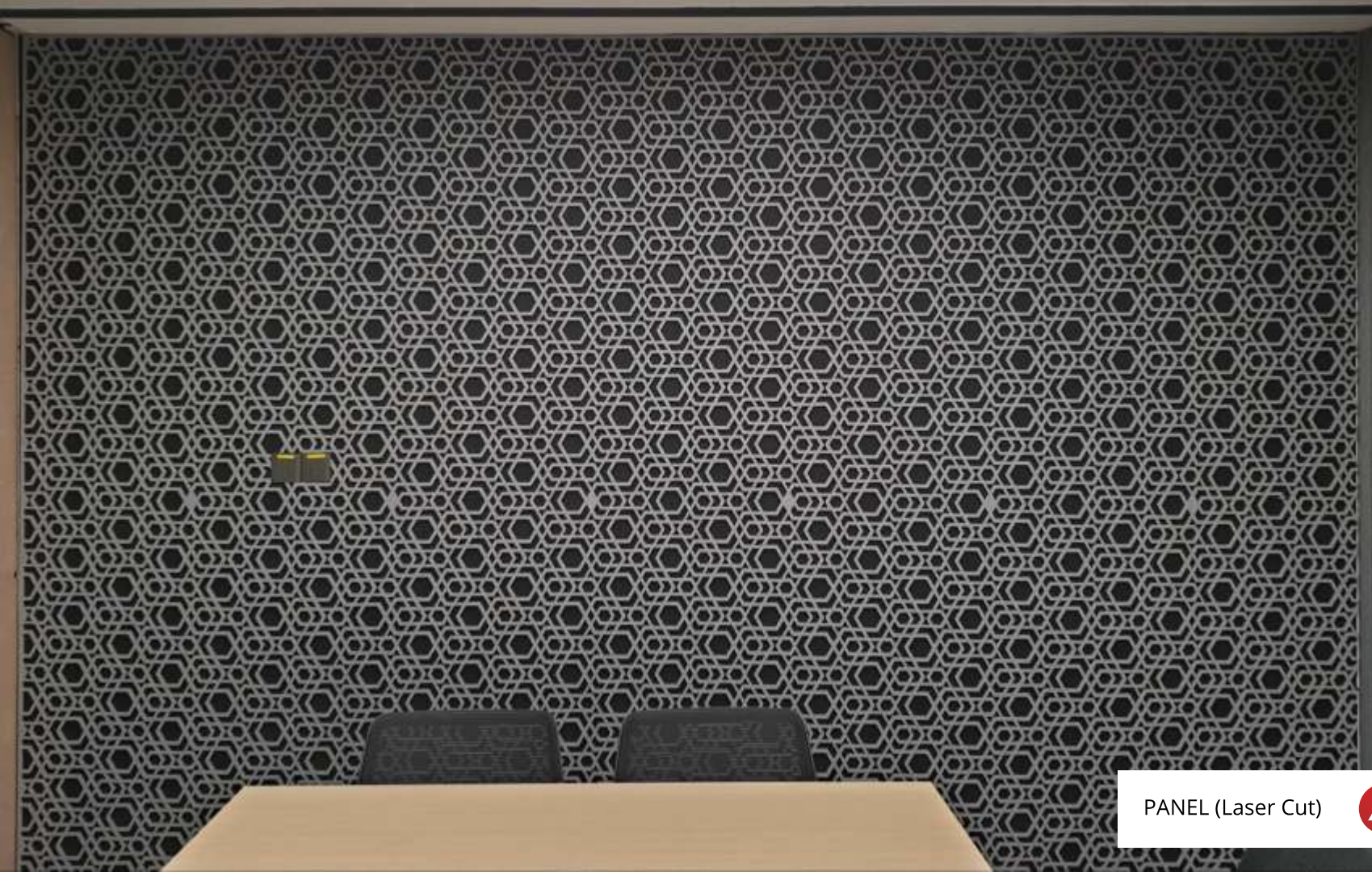
BAFFLE





BAFFLE





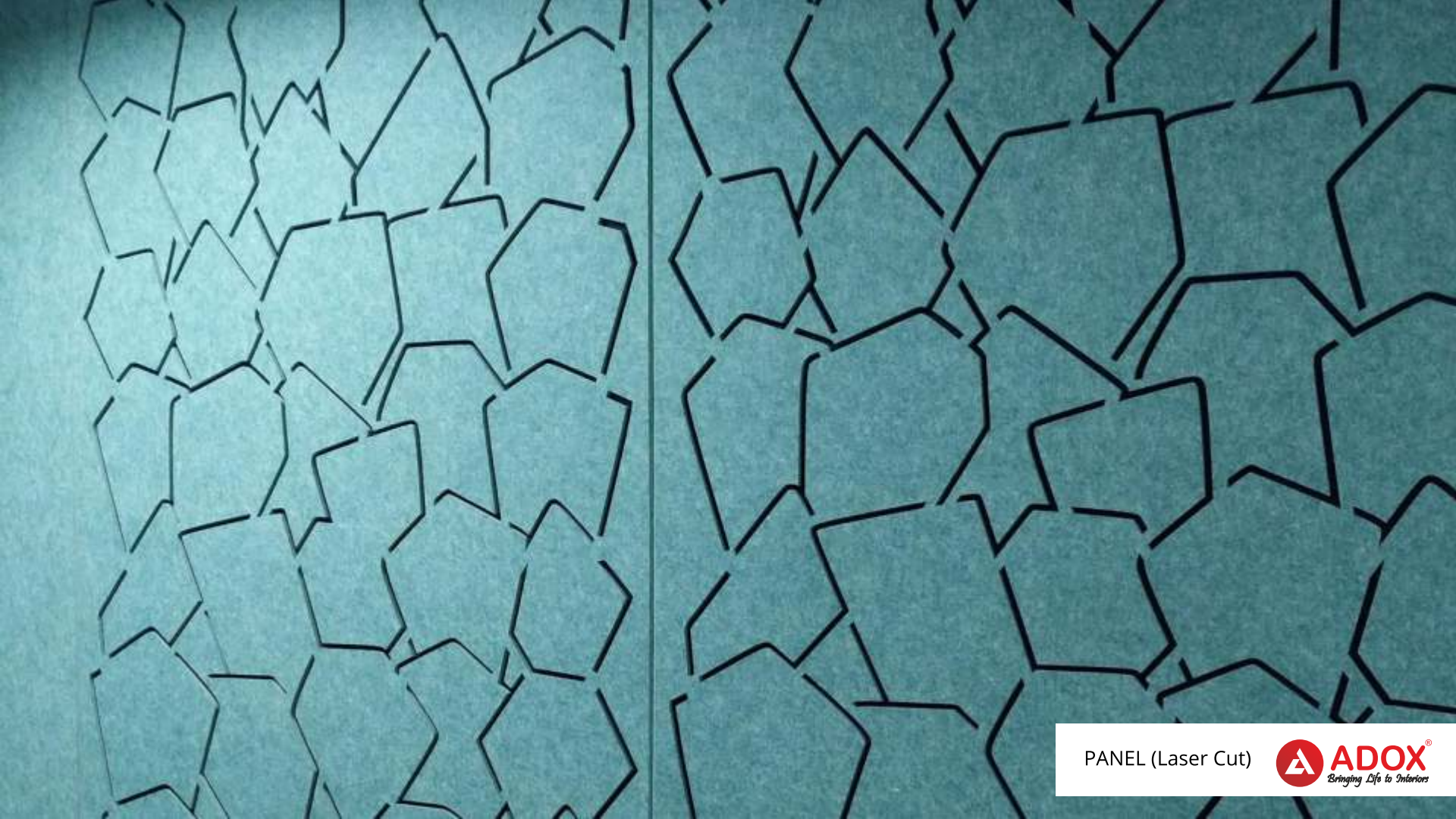
PANEL (Laser Cut)



PANEL (Laser Cut)







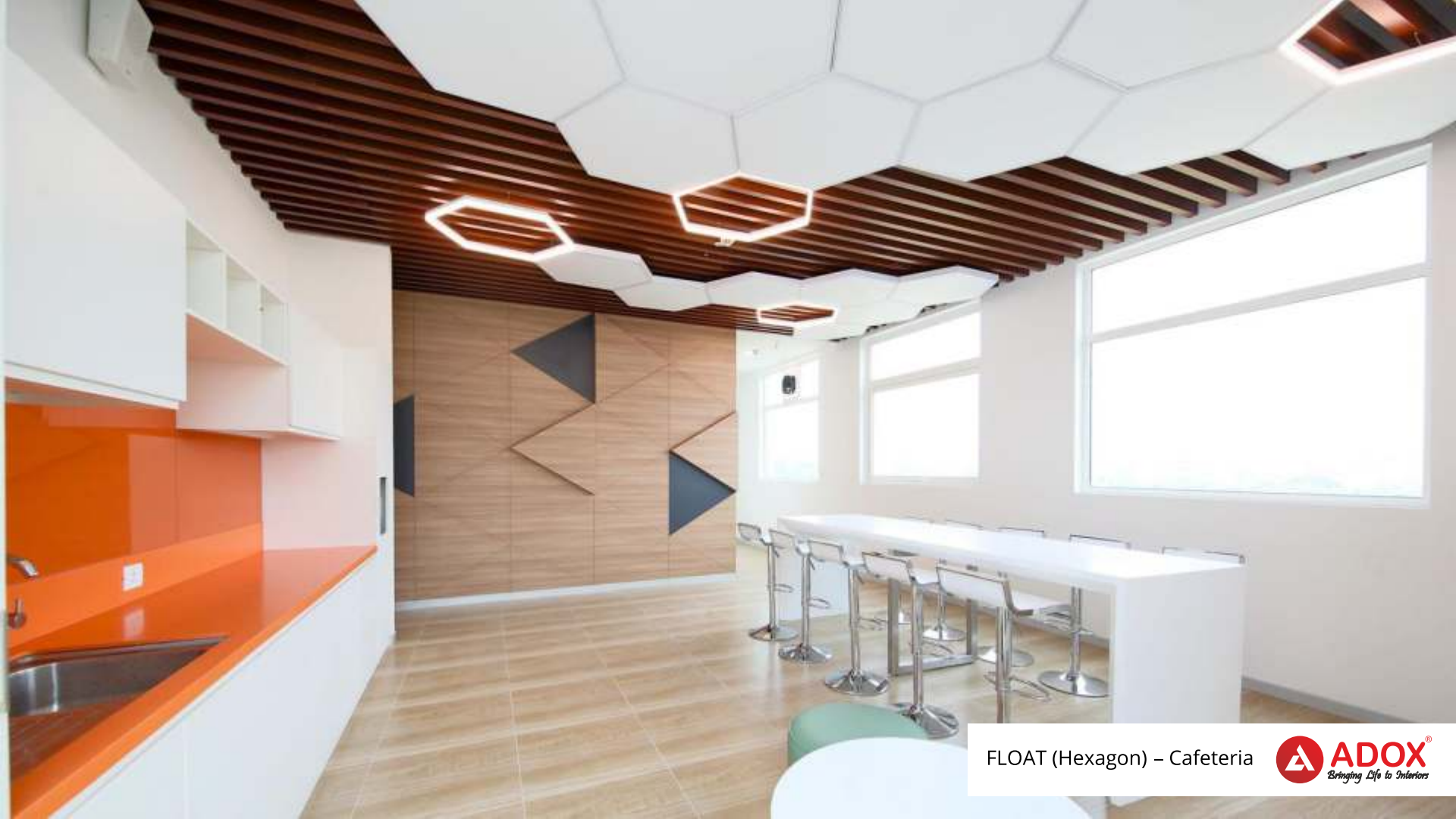
PANEL (Laser Cut)





PANEL (Laser Cut)





FLOAT (Hexagon) – Cafeteria





FLOAT (Circle)





CELL CEILING





CELL CEILING





CELL CEILING





CELL CEILING







SCREEN





## **ADOX** Acoustic Products

---

### **SUNSHINE INTERIOR**

Plot No.-5, City Enclave, Godown Area, Pabhat Road,  
Zirakpur - 140603 Punjab, India  
Phone : +91 95011 01961, 85588 40543  
Email : adoxinterior2021@gmail.com  
Website : www.adox.co.in

For Visit Website  
Scan QR Code



---

Follow us on:

